

### 3.1.4. Report Institution has created an of Eco-system for innovations and other initiatives for creation and transfer of Knowledge

The institute has created an Eco-system for innovations and other initiatives for creation and transfer of Knowledge for the teaching- learning process. The quality of the teaching-learning process is maintained by adopting appropriate policies and procedures utilizing the infrastructure facilities of the college. The college is equipped with adequate facilities for accommodating the needs of students, faculty and the administrative staff.

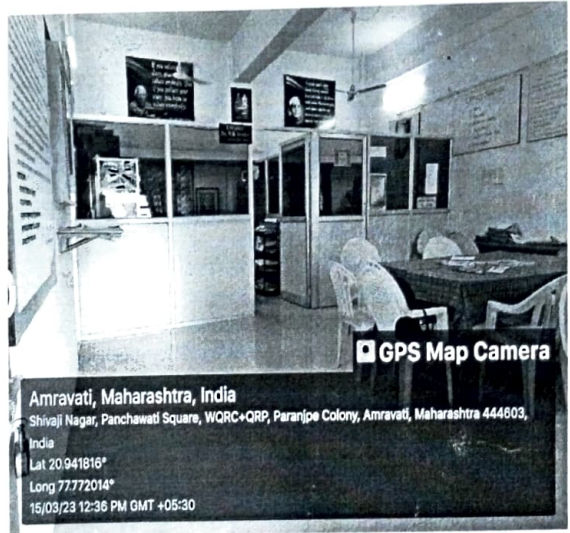
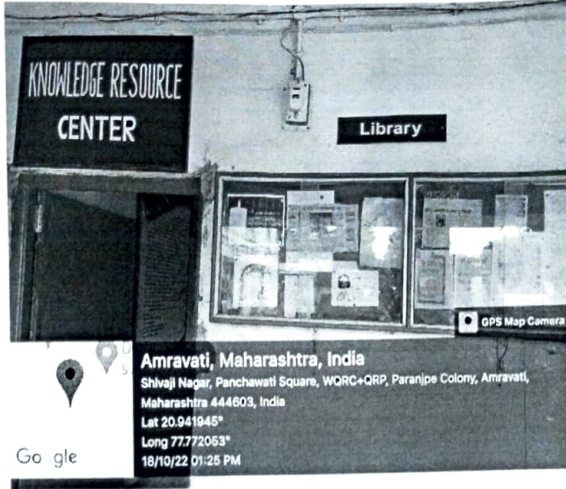
The College has taken initiatives for creating an ecosystem for innovations by establishing Research Promotion Cell, strengthening Information and Communication technology infrastructure and making Memorandum of Understanding (MOU) for experiential learning and innovation. The college has signed MOU with other colleges so that students can acquire the latest development in Education through the collaborative activities. The college regularly publishes a "Gyanjyoti" annual magazine to provide encouragement to students to inculcate novel ideas and also encouraged to publish their articles in the college magazine, wall magazines, journals and newspapers. The students of college conduct projects, surveys, and field visit to develop social values. The college has "Research Centers" in two subjects namely Education and Library and & Information Science which play an important role in creation and transfer of knowledge. All teachers are registered as Ph. D supervisors in the Research Centre for various subjects. 20 research scholars are registered for PhD in the college. Our faculty members regularly apply for Minor and Major Research projects to UGC and ICSSR. The students are motivated to participate in Intercollegiate Sports Tournaments, Youth Festival and Avishkar for presenting innovations at University Level. The college organized Workshops, Orientation lectures, National Priority programmes, various outreach activities to identify possible and needed innovations. The college has strengthened the research facilities in Knowledge Resource Center by accessing N-LIST consortia of INFLIBNET and National Digital Library of India. The college has 100 MBPS Connection for Internet facilities. The college has a well- maintained computer lab, Wi-Fi facility, Networked computer, and printing facility, Scanner-printers, LCD projectors, interactive Boards, White Board and Green Boards. LCD projectors and interactive Smart Boards are effectively used in regular classroom teaching where learning is more comfortable and comprehensive. An interactive whiteboard enhances the effectiveness of classroom instruction and learning. All the classrooms are equipped with computers and LCD projector. The library supports the academic needs of students, research scholars, and Faculty of the college by providing information resources such as books, journals, periodicals, proceedings, reference books, project reports, and theses. The Students and Faculty of the college have optimally utilized the well mentioned laboratories such as computer lab, technology, psychology lab, and science lab. As per need of new era teaching learning facilities are provided to enhance brain storming, think tank of student teachers. The institution tries to provide new aspects of technology.



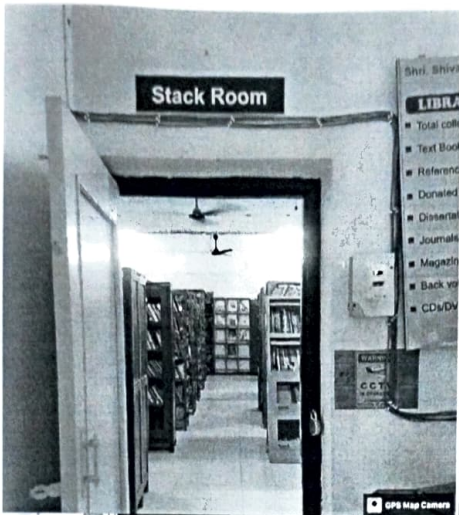
  
Principal  
Shri Shivaji College of Education  
Amravati.

# SHRI SHIVAJI COLLEGE OF EDUCATION AMRAVATI

## LIBRARY KNOELEDGE RESOURCE CENTRE



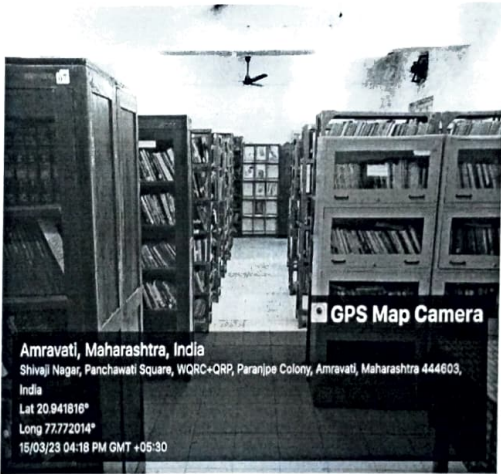
*Principal*  
Principal  
Shri Shivaji College of Education  
Amravati.



Amravati, Maharashtra, India  
Shivaji Nagar, Panchawati Square, WQRC+QRP, Paranje Colony, Amravati, Maharashtra 444603, India  
Lat 20.941847°  
Long 77.772067°  
18/10/22 01:30 PM



Amravati, Maharashtra, India  
Shivaji Nagar, Panchawati Square, WQRC+QRP, Paranje Colony, Amravati, Maharashtra 444603, India  
Lat 20.941849°  
Long 77.772072°  
18/10/22 01:30 PM



Amravati, Maharashtra, India  
Shivaji Nagar, Panchawati Square, WQRC+QRP, Paranje Colony, Amravati, Maharashtra 444603, India  
Lat 20.941816°  
Long 77.772014°  
15/03/23 04:18 PM GMT +05:30

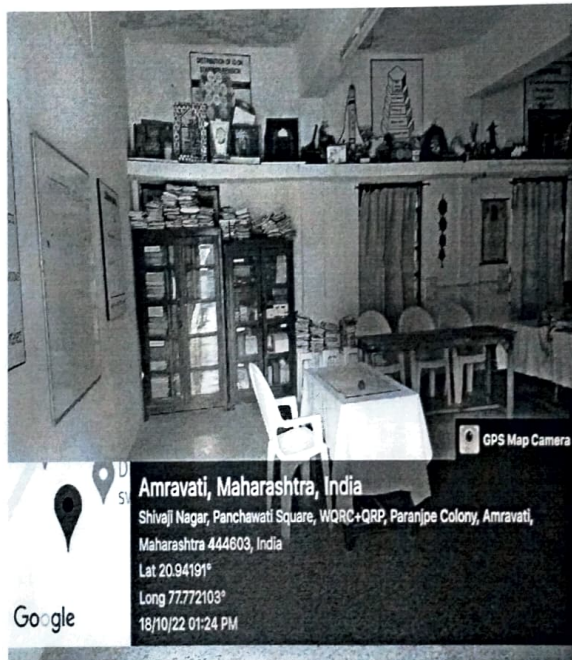
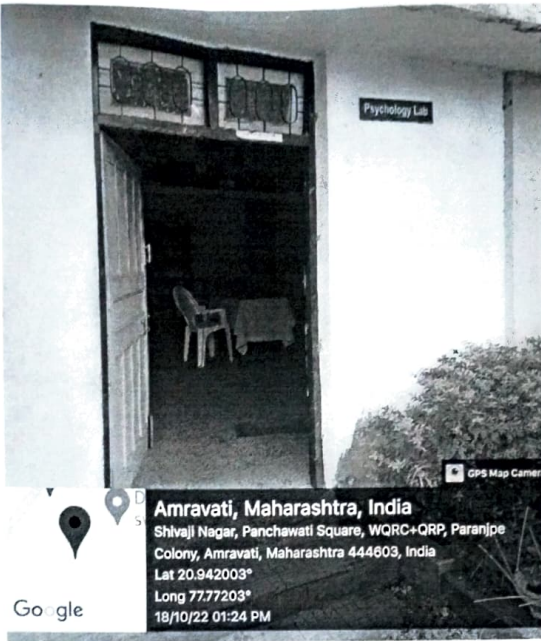
*Principal*  
Principal  
Shri Shivaji College of Education  
Amravati.



# ICT LAB



  
Principal  
Shri Shivaji College of Education  
Amravati



*Dr. S. S. Patil*  
Principal  
Shri Shivaji College of Education,  
Amravati.